

April 2023



THE CORN EXCHANGE TIMES

Newsletter of the Sinodun Players



**The Queen's Award
for Voluntary Service**

April 2023

Musings from the Chair

Since my March musings calling for all of us to reach out to anyone we know to come and volunteer, we have been getting a trickle of people coming through with an interest to join. So, thank you to those who have helped put the word out there. There is still room for more so please keep up the good work and let's continue to bring people in.



Our early spring production of three one act plays performed in the Club Room was a great success. We had a sell-out run and some excellent feedback from the audiences. So, big congratulations to Chris Harris and all of the team. I know that this space has successfully hosted SP productions and the odd musical evening in the past but I am really keen to keep the momentum going and promote it as a multi-functional facility. Importantly it needs to continue as a rehearsal and acting space for SP productions, but we are also keen to open it up for more in-house musical evenings, resurrect a film club and in the future offer it to visiting musical events and smaller more intimate visiting theatre productions. There is still work to be done to get all this running smoothly but I am confident with a bit of planning we will succeed.

Encore has been busy with their Easter workshop and it was an added bonus that they were able to work with the one act play set in the Club Room. I was invited to come along with mums and dads to watch their production. It was absolutely delightful and they were clearly having so much fun! This small group of young people performed with style and confidence and I also witnessed a strong sense of teamwork and discipline. Well done to Diana, her team and all the children that were involved. I look forward to the next one.

Sheila's Island, our late spring production directed by Gloria Wright, has now been cast and rehearsals have begun. This is an extremely challenging and complex production all round. Set on an Island, surrounded by water and acted out in the dark with mist and fog! For this production it was decided that the set should be built up in the Club Room (minus

April 2023

the water I hasten to add!) to allow the four actors to get used to climbing a tree and acting on an undulating surface. More and more we set ourselves challenges and raise the bar with our productions and this is definitely going to be a challenge for all the team on and off the stage. I'm really looking forward to seeing this production and tickets are already on sale so please come and support them.

Before the SPC meeting last week we were invited by Marilyn Leadbetter and Jean



Simmons to view the newly organised wardrobe. What a transformation! The Wardrobe Warriors were asked to cull stock by 50% and make the space safe. Everything is off the floor, sorted and stored in boxes, cubby holes or hanging on rails. You can walk around with ease and everything is clearly labelled. They have also cleverly utilised the upper dressing room and stored all their haberdashery and, let me tell you, there is not a jacket, shoe or zip out of place! This hardworking team of ladies are rightly very proud of what they have achieved and we applaud them all for the dedication and, I know, extremely hard graft to get to this stage. I also include Jan Castle in these plaudits who started off the process and I know gave up many hours coming in everyday clearing and carting stock off to the storage units. So, a massive thank you and congratulations to all.

Thanks also goes to Bruce Williams who organised and ran a very successful Introduction to Lighting Design Course. It was well attended and everyone was enthused by Bruce's passion and skill. We are planning to run more courses through the year, not only on Lighting Design but hopefully on all aspects of theatre work from technical to directing and backstage support.

So more dates for your diary. Look out for auditions for A Bunch of Amateurs and The Welkin, coming up in the next couple of weeks. Dorothy Hirsch who is directing A Bunch of Amateurs would love to mentor anyone who would be keen to learn more about directing so if this interests you, please get in touch. The annual Wallingford Car Rally is coming up

April 2023

on Sunday 14th May and we are very excited to have Chitty leading the procession into the Kinecroft. She will have her own enclosure so come along and have a chat with us about our production in 2024. Audition dates are now released (see poster later in this issue). There are still tickets left for our 75th Anniversary Dinner and Dance at the George Hotel on 3rd June. Please get in touch with Alice if you would like to come along and apologies to those who would have liked to have come but couldn't make the date.

Happy Easter all!

Caroline Malnick

Chair, Sinodun Players



SP PRODUCTIONS NEED YOUR HELP!!

We need more people to get involved in our backstage teams. We are looking for people who can turn their hand to set design, set construction and costume design. We have wonderfully talented, experienced, and dedicated members and volunteers labouring away backstage but they need your help.

So, if you enjoy being part of a team but also interested in having a go at leading a project then we would really love to hear from you.

Equally, if you have family, friends, neighbours, or know of anyone with some hours to spare, who would be interested in joining us then please encourage them to come and get involved!

For more information on how you can help please email – Caroline at chair@sinodunplayers.org.uk



BOARD BANTER – April 2023



March was a good month in the Corn Exchange; we had two very successful live shows – “Chess” which was a sell-out and the One Act Plays which very nearly sold out. Many congratulations to everyone involved in both productions.

It is fantastic to see that the banners on the railings really do get a message out there. Recently we have been appealing for more volunteers and this has resulted in a good number of people coming forward, some of whom have only recently moved to the area. However, we now urgently need to recruit the following:

Minutes taker for the Board: This will involve attending the monthly Board Meetings (generally on the first Monday of the month), taking notes of the meeting and then distributing them – together with the agenda – before the next meeting. It’s a great way to learn all about the inner workings of the Corn Exchange and there are lots of people on hand to give help. If you are interested please email either me (chair@cornexchange.org.uk) or our HR Director, Julie Grimshaw (HRDirector@cornexchange.org.uk). Or, of course, have a chat with either of us when you see us in the Corn Exchange. One or other of us always tries to be there on a Friday and Saturday morning when we particularly enjoy sampling the home made cakes!!

IT Assistance: We are trying to boost the number of people who can help with specific development tasks in our Box Office system and on our server. We are particularly keen to find people who have knowledge of WordPress and HTML. If you think you could help with this – even if it’s just a couple of hours a month – please speak to Julie G. or me.

And something that everyone can help with: we have now introduced a review section on our website. It would really help us to get a higher Google placing if you would send in reviews about shows or films that you’ve seen. It doesn’t have to be long or complex, just a personal insight into what you felt about something you’ve seen. And this can, of course, be about films that you’ve seen elsewhere so that we can build up a picture of what people are watching. Just send in a word document to reviews@cornexchange.org.uk and – after checking – it will be put up on the website for everyone’s information.

Sadly we have now lost the government subsidy for our energy bills. Can I therefore remind everyone again to be sure to turn off all lights when they leave the building. Whilst our gas bill will hopefully go down as we head towards summer, our electricity costs will stay the same at around £70 per day.

Finally, we are really sorry that some people have had their evening in the Corn Exchange spoiled by the gurgling noise coming from the radiators. We are aware of the situation and are investigating the cause. Please bear with us; if you are an usher or Front of House Manager and you get a complaint, would you please note it in the book together with a record of which seat the complainant was sitting in.

Gloria Wright

Chair, Corn Exchange Wallingford Ltd.

April 2023



The Sinodun Players at the
Corn Exchange Theatre
Wallingford present



SHEILA'S ISLAND

A Comedy in Thick Fog by Tim Firth
Directed by Gloria Wright

Book tickets online at cornexchange.org.uk



OPENING NIGHT
SPECIAL OFFER!

Tuesday 23rd May • 7.45pm
TICKET PRICE £9.00

FOLLOWING PERFORMANCES:

Wednesday 24th May

to Saturday 27th May at 7.45pm

MATINEE PERFORMANCE

Saturday 27th May at 2.45pm

All Tickets: £12.00

April 2023

Sheila's Island

by Tim Firth

May 23rd – 27th

Auditions were held last month for Sheila's Island, the next Sinodun Players production at the Corn Exchange. I was overwhelmed by the number of wonderful actors who turned out to the auditions and had some really difficult decisions to make. But that does mean that I have a truly wonderful cast and I'm already enjoying working with these 4 talented ladies.

Cast:	Sheila	Alex Reid	Crew:	Producer	Julie Utley
	Denise	Becky Lee		Stage Manager	Guy Gilks
	Fay	Rebecca Cleverley		Set Design	Greg Ryder & Mike Simmons
	Julie	Charlotte Lloyd		Lighting	John Evans
	Malcolm	Edward Simpson		Projection	Mark Brome
				Sound	Mark Brome & Poul Alexander
				Wardrobe	Janet Charleston
				Properties	Val Kent

I am particularly pleased to welcome Charlotte Lloyd as a new member of the Players. She was part of the cast of "Chess" and enjoyed herself so much that she's come back for more! Many of you will remember Becky Lee from "Dead Funny" and "Bedroom Farce", Alex Reid has appeared in "Outside Edge" and – more recently – "Twelfth Night" and Rebecca Cleverley needs no introduction although this time she is tackling a character that is very different from Queen Apricot in our latest panto!!

We are all having great fun with rehearsals, although there is no question that it is a challenging play in many respects. There are a lot of laugh out loud moments but, equally, part of the play does involve the difficult subject of suicide.

Tim Firth has written a wonderful, contemporary script that revolves around 4 very different women who are thrown together on an island. They are wet (very wet), they are cold and they are lost in the fog. They probably wouldn't choose to go out for a meal together, so how will they cope when they're stuck with each other in such inhospitable circumstances?

This play is proving to be a huge challenge not just for the cast but also the whole team. I've asked for fog and mist, water, complex sound effects, an extremely complex lighting design and projection. The props list is massive and wardrobe will have to deal with getting clothes dry every night. I think I'm going to be getting a lot of drinks in on the last night!!

Book now to ensure that you get your favoured seat <https://www.cornexchange.org.uk/whats-on/>

Gloria Wright

Director

April 2023

Sheila's Island

By Tim Firth

Directed by Gloria Wright

The Corn Exchange Theatre Wallingford

BOOKING NOW OPEN

Online at cornexchange.org.uk

SHOW DATES, TIMES & PRICES:

OPENING NIGHT – Tuesday 23rd May at 7.45pm

Special offer ticket price £9.00

FOLLOWING PERFORMANCES:

Wednesday 24th May to Saturday 27th May at 7.45pm

MATINEE PERFORMANCE: Saturday 27th May at 2.45pm

All Tickets: £12.00

A Comedy in Thick Fog

Starring

**Rebecca Cleverley as Fay, Charlotte Lloyd as Julie, Rebecca Lee as Denise
& Alex Reid as Sheila**

Imagine you are sitting at work and an email comes into your inbox: "You have been selected to take part in a team building exercise in the Lake District in November ..." How might you react? "*Oh bloody hell*" or "*what a lovely opportunity to get to know my colleagues*".

The above would be the prelude to what takes place in "Sheila's Island". Four women are put in a team and they somehow end up on an island in the middle of Derwentwater. The play shows us how these characters react to this less than ideal situation and what transpires is both funny and moving. Tim Firth (author of "Calendar Girls", "Kinky Boots", "Our House", "The Flint Street Nativity") gives us a script full of dark humour and well-observed insights into how we all might react to impending disaster.

There are 6 performances including a Saturday matinee and the opening night has a special offer ticket price of £9.00.

Book now for this very human dark comedy set in a ground breaking atmospheric stage design with fog, water and projection design.

Book online at cornexchange.org.uk

April 2023

AUDITION!

A Bunch of Amateurs

by Ian Hislop & Nick Newman

Comedy of the season (nothing dark here...)



April 12 & 14, 7:30 April 16, 3:30 in the Dennis Wood Studio

Copies of the script available in the 'Next Productions' pigeon-hole in the lobby.

Keen to boost his flagging career, fading Hollywood action hero Jefferson Steele arrives in England to play King Lear in Stratford – only to find that this is not the birthplace of the Bard, but a sleepy Suffolk village. And instead of Kenneth Branagh and Dame Judi Dench, the cast are a bunch of amateurs trying to save their theatre from developers. Jefferson's monstrous ego, vanity and insecurity are tested to the limit by the enthusiastic am-dram thespians. As acting worlds collide and Jefferson's career implodes, he discovers some truths about himself – along with his inner Lear!

(Director's druthers in parenthesis.)

Jefferson Steel - a fading Hollywood star who is arrogant, insecure, brash, gauche, demanding, vulnerable and ultimately aware of his own absurdity. ***(Can do credible American accent. Any region. In the US. Don't forget charismatic and charming!)***

Dorothy Nettle — director of the Stratford Players and the moving force behind keeping the theatre alive. Her sweet and accommodating manner conceals her inner steel. ***(Sense of humour useful.)***

Jessica Steel — Jefferson's teenage daughter, who has been neglected by her Hollywood star father and now wants to make him pay for it. ***(Teen outlook on life.)***

Nigel Dewbury - solicitor and leading light of the Stratford Players. Pompous, stuck-up and self-regarding, he believes he is the star of the show, and should play all the leading roles. He also fancies his romantic chances with Dorothy. ***(Honestly the lines tell the story and Nigel can be any and all of those things, but he needs to be 3 dimensional, not a caricature.)***

Mary Plunkett — owner of the Rectory bed and breakfast. Jolly, generous and an unashamedly adoring Jefferson Steel fan — although somewhat confused about which roles he played in his films, and how keen he is on her. ***(Is very funny without any idea that she is. Played seriously.)***

Denis Dobbins — handyman and village Mr Fixit. Avuncular though slightly dull, Denis is star-struck by Jefferson and fancies heading up his entourage of one. ***(Anything goes.)***

April 2023

Lauren Bell — thirty-something marketing executive former physiotherapist and the sponsor's wife. Passionate about the arts and smarter than her husband allows her to be, she's treated as a bimbo because of her looks. *(Comfortable grace of a woman who knows she's good looking, but that's not what she's about.)*

Bevy of Journalists – Not onstage in script, but may be in this production. They periodically shout questions at Jefferson Steele.

David/Albany – Appears onstage on an iPad. Intend to do this live during the run.

Dorothy Hirsch (temperence8@outlook.com)

Director

and an invitation from Dorothy Hirsch to join her as Assistant Director ...

I am offering the opportunity to someone age 18+ (or++) to participate in the process of putting together a theatrical production.

- ◇ *You could title yourself ... ASSISTANT DIRECTOR*
- ◇ *or DIRECTOR'S ASSISTANT*
- ◇ *or THE PERSON WHO KNOWS ALL THE INS AND OUTS*
- ◇ *or (COME UP WITH YOUR OWN TITLE)*

You will be encouraged to sit with me during auditions and as many rehearsals as you can attend and :

Offer ideas, help move furniture, learn some director skills, supervise tea-making, come to tech meetings, consult your smartphone to find answers to technical questions and ...?

I am delightful demanding and sometimes I wear my pearls



*Come work with me
It will never be dull!*

April 2023

The Welkin

By Lucy Kirkwood

Oct 18th-21st 2023

“A Woman’s Work is Never
Done”



First performed at the National Theatre in 2020 Lucy Kirkwood’s acclaimed play *The Welkin* is set in 1759 on the Suffolk/Norfolk border, while England awaits the return of Halley’s Comet. The play tells the story of Sally Poppy who has been convicted of murdering a child. Sentenced to be hanged: Sally pleads pregnancy. If true, this would save her from a hanging as her sentence would be transportation to the Colonies. To determine if she is with child, twelve matrons are pulled away from their housework to

form a feminist version of *Twelve Angry Men’s* jury.

The Welkin explores what it is to be a woman and deal with all the challenges of the female body, from childbirth to menopause. The play draws parallels with the modern world in its observation that “A woman’s work is never done”.

Auditions

Mon - 24th April 7.30 to 9.00 Curtis Room

Weds - 26th April 7.30 to 9.00 Curtis Room

Fri - 28th April 7.30 to 9.00 Studio

Sun - 30th April 2.00 to 5.00 Studio

Character List:

Sally Poppy- young woman pregnant sentenced to hang. Rough. 21 yrs.

Elizabeth Luke - Midwife/widow - Sympathetic to Sally. - 35 yrs

Judith Brewer - Menopausal has wild dreams of a shepherd's boy. -50s

Charlotte Cary - an imposter pretending to be posh from Colchester. -50s

Kitty Givens - Scottish from Oban doesn't love the English but the weather is tolerable. 20-30s.

Helen Ludlow -12 miscarriages but husband makes her laugh she thinks her stays will spilt. 40s

Sarah Hollis - dumb fell silent during childbirth never spoke since. 40-50s.

Emma Jenkins- has a shop selling dry goods. Son 12lbs at birth but "We get along very well now. - 40s.

Ann Lavender- husband is a poet- bringing up children in peasant honesty. -20s+

Mary Middleton- pregnant 5 children lives in a haunted house. -Late 20s+

Hannah Rusted- struggling to make ends meet. Dreams of husband being press ganged. -30s

Sarah Smith - 3 husbands and 21 children. Could stand on her hands. -80+

Peg Carter - husband gardener to Wax family. What he does with his tongue is amenable. Pregnant. -20s

Mr Coombes - bailiff ex-thatcher fell from roof broke his arm. -40s

Fred Poppy - Sally's cuckolded husband. Violent but does care for Sally. -30s Actor doubles as Doctor

Kathy Luke - Elizabeth's daughter. -11+ Doubles as Alice Wax the victim

Lady Wax -Alice's Mother. -30s



April 2023



We had a wonderful time at Encore's Easter Holiday Workshop last week where 12 young people came along for 3 days and put on a play in that short time. We performed an abridged version of George's Marvellous Medicine to an invited audience in the new playing space in the club room.



The space is wonderful and the group felt very professional with the lights, set and audience in the room. The group worked super hard to put the play on and had fun creating character, sourcing bits of costume and props and staging the action.



They also ensured that the workshop was inclusive and I was particularly impressed how they all



supported each other whenever it was needed. Feedback from the audience was really positive and reflection of the hard work the students had put in.

I put this show on in 2019 with the then Footlights and at the time our good friend

Paul Nicholls made a 'house' for Grandma to burst out of. We were delighted to be able to use it again this week and hope he would have been proud of us. We're hoping to run some similar workshops in the summer holidays so watch this space!



April 2023

Renewal of Annual Membership of the Sinodun Players for 2023/4

Please can I remind everyone that the SP membership year runs from 1 June to 31 May.

Annual Membership Payment not by Standing Order

Annual membership paid by cash, cheque or on-line banking transfer (not by standing order) will lapse on the 31st May. I will send you a reminder by email or post in early May.

Full membership is required on or before the 1st June, if you are a trustee or a member of the Sinodun Players Committee.

Adult Full	£30	Joint Full	£50
Full Senior (60+)	£20	Joint Full Senior	£30
Associate	£15	Joint Associate	£25
Encore Member/Student (in full-time education)			£15
Family – maximum of 2 adults (Full Members) and up to 6 children in full-time education			£60

If you wish to pay by on-line banking transfer please make payment to the following account, using your initial and surname as reference:

Account Name: The Sinodun Players

Account number: 40819654

Sort code: 20-01-09

Membership Payment by Standing Order

Many of you very helpfully pay by standing (Banker's) order. This means that each year a set amount is automatically paid out from your bank account to the Sinodun Players Membership account, so there is less paperwork for you and for me.

I am aware that circumstances change over the years, and indeed categories of membership can change. For example, once a full member reaches the age of sixty they are entitled to Senior membership at a reduced rate. And once children of adults who have full membership are old enough to join Encore they may find that Family membership is a more cost effective option.

If you pay by standing order now may be the time to check what you currently pay, and whether a different category would either be more appropriate or provide better value for you. If so, you will need to amend the standing order directly with your bank. I'm afraid we are not entitled to amend any details with your bank and cannot control the amount paid. If you do so, it would be really helpful if you let me know so I know what to expect at renewal time.

Members Who Paid 10 Year Membership in 2017 and Life Members

You do not need to do anything!

Please be aware that the username and password for the SP membership website will be changing on 1 July. The new codes will be sent out to you once you have renewed. I will contact life members with the new codes by email or post before the end of May.

If anyone isn't sure how they have paid in the past please contact me and I can let you know.

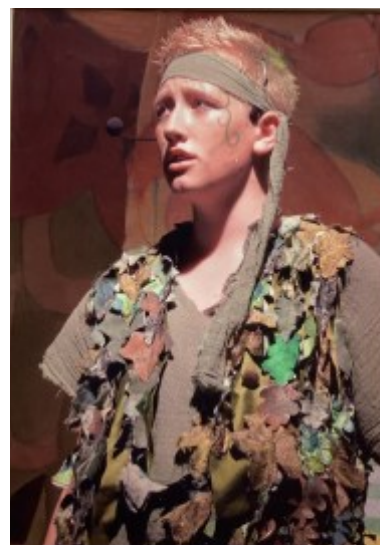
Thank you,

Barbara Wood - Membership Admin

April 2023

Congratulations to Jack Prince

Following in the footsteps of local names such as Mark Leadbetter, Peter Hepplethwaite, Julie McGuire and Edmund Wood, all home grown SPs who came up through the ranks of Embryo, Young SPs, Backdrop and Encore to gain places at theatre schools and build their careers on stage we are delighted to congratulate Jack Prince. Jack spent many years watching Mum, Fiona Prince (now Huntingford-Ledger) who also grew through Embryo. Jack made his SP debut aged only 9yrs playing chess against Mike Long in Shadowlands. (Coincidentally, his



most recent success was in the role of Freddie in the SP and Crescendo collaboration of Chess). Jack went on to play Peter Pan in 2009 as well as Jack in the Box in Babes in the Magic Wood and more recently was back on stage playing Charles Hart in Nell Gwynn. It was this role that reignited his passion for dramatic art and he has recently been awarded a place at The Bridge Theatre Training Company in Camden and will begin his full-time studies in September. We wish



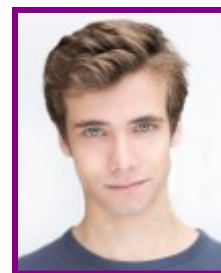
him every success and look forward to welcoming back to the Corn Exchange whenever he is able. Several SPs have very kindly expressed a desire to support Jack's studies (as going to Drama School, especially in London, is scarily costly) for which Jack is very grateful.

Anyone interested in supporting Jack please do feel free to contact him at jackarprince@gmail.com or mobile 07730413815 or of course Fiona at fionap34@icloud.com or mobile 07554662654

And speaking of former Encore members, the companion lead in that same production of Peter Pan, **Oliver Dench** (Mayer), also went on to drama



school before opening a company of his own. Most recently you may have seen him in the lead role in Hotel Portofino in which he plays the troubled war veteran son of the owner of the hotel. Great to see another success story from our former young members. We look forward to many more!



Three One Act Plays - Mike Rowbottom writes:

Talk about ambitious: Chris Harris deserves a gold medal for even attempting to direct three one act plays in a new (ish) space, let alone for pulling it off so well.

Three plays, three different casts, although the first two shared a couple of people and assembling so many for what might have been seen by some as a low-level venture is a delightful surprise.

Not low level to this audience member I hasten to add; I am a big fan of the intimacy of studio theatre and the opportunities it can offer for adventurous drama. Chris exploited this well and managed to hide his light in the first because his adaptation of the PG Wodehouse story, *Indian Summer Of An Uncle*, went unsung in the programme. However, those of us who've been around a few years will remember him offering this same piece as a festival entry in 2005 and scooping up the newly minted Best Original Play award at the Henley Drama Festival.

It was a treat to see it reprised and with a fine cast to bring it out: Chris himself as Uncle Lord George finding love in an unexpected place, Sue Brown, a revelation as the true object of his desire, Jo Sokolowski as his domineering aunt and channeling Lady Bracknell in the process, Len Pannett as Jeeves, suitably deferent whilst maintaining an air of unchallengeable superiority, and Jack Field brought the necessary Wodehousian elements of innocence, puppyish enthusiasm and circumlocution.



April 2023

A Talk In The Park was an interesting choice which fitted the space neatly. It's more a series of monologues with occasional moves and unusually for its author, Alan Ayckbourn, quite blunt in its approach. Chris and Jack returned for this and were accompanied by Teula Bradshaw, Torin Saretti and Sarah Enticknap. The point was, rather obviously, that many if



not most conversations are more about talking than listening with the piece climaxing by everyone talking simultaneously to no one in particular; the sort of piece we might have seen from Karyl Churchill. I struggled with this but not be-

cause of the performances or the direction, they combined to bring over the point of the piece perfectly well and if the Club Room Studio exists for anything it's for trying out this sort of stuff. Just not for me.

The final play was a triumph: a satirical and funny look at the early obsession with psychoanalysis. Where is the humour in that you might ask? There's plenty if you know where to look and writer Susan Glaspell did just that in 1914. The excellent cast of Natalie Davies, Chris Black and Georgia Willans wrung every drop from a rich script and exploited every



opportunity for a laugh. This is not to rubbish what was the groundwork for Psychology, but there was an obsession of making everything and every action motivated by the inner consciousness and sometimes a cigar is just a cigar.

The other star of the evening was the space itself. It's so good to see this back as a performance area; it opens up all sorts of possibilities and looks wonderful. If we care about our art then we need to look at smaller scale places to keep it alive as audiences in the bigger ones are harder to come by these days. Now we have it back, let's use it!

Congratulations!

Warmest congratulations to Johnny & Alice Cornelius on the birth of **Bobbie** on Saturday 8 April. She was not so little in fact, weighing in at just over 9lbs. Born in St George's Maternity Ward at the local hospital, Bobbie is a true Wallingfordian and, who knows, one day may well be a firefighter like Dad or a teacher like Mum. SP Chairman, Caroline Malnick heard the news whilst in Belgium over Easter and was one of the first to send her greetings. As well as the day job, Alice has been busy with her SP committee duties and is currently organizing the 75th Gala



Dinner at the George Hotel on Saturday 3 June. Will it be Bobbie's first event or do I see a baby sitting opportunity.

Health & Safety

Lone Workers

The recent report that we have received from First2HelpU shows that the Lone Worker phones are not being used very often. Either we have all stopped coming into the building on our own (even for short periods of time) or we are just not using the system!

The Lone Worker phones were obtained to both protect us working alone in the building but also to prove that the Company is doing what it can to protect us working alone in the building.

If you have not been set up on the Lone Worker system and are likely to be in the building alone please let me know and we will get you set up and trained.

Signing In

Everyone is very good at signing in backstage but very few sign in front of house during the day. The sign in clipboard is in the white box on the wall to the left hand side of the front door, please use it to both sign in and out and before you lock up and set the alarm *please make sure that there is no-one else left in the building.*

Thank you

Julie Grimshaw



April 2023

Calling all Directors!

The Sinodun Players (SP) Artistic Team are starting to plan the SP programme for 2024! That may seem a long way ahead, but it isn't! The SPs stage five in-house shows in the Corn Exchange every year; a pantomime in January, and productions roughly in early spring, late spring, summer and autumn.



Prospective directors, there's no time like the present to start submitting ideas as formats, or full proposals with preferably complete scripts for our consideration. Please email us with your proposed show(s). Provide us with the script (hard copy or electronic) and do include your contact details (mobile and email).

Scripts may be left in the Artistic Committee's pigeon hole in the Corn Exchange (CX) lobby or emailed.

The **deadline** for *panto* scripts is **30th April 2023**.

The **deadline** for submissions for the rest of the season is **31st May, 2023**.

Director interviews will be scheduled from mid-June.

Announcement of 2024 season will be at the AGM in September.

New directors are invited to assist a more experienced director as they go through the process of creating a show. Contact the Artistic Team for opportunities.

Less experienced directors are encouraged to propose one acts for producing in the Clubroom (our flexible/black box performance space), or as the Sinodun Players' Festival entry. Full-length shows with small casts and basic set requirements would be perfect for Clubroom productions.

And finally all members are invited to propose plays that they think the Sinodun Players should produce and if selected we will find the perfect director to make it happen.

The Artistic Team

Sarah, Dorothy and Guy

Please contact us at committee@drama.sinodunplayers.org.uk

April 2023



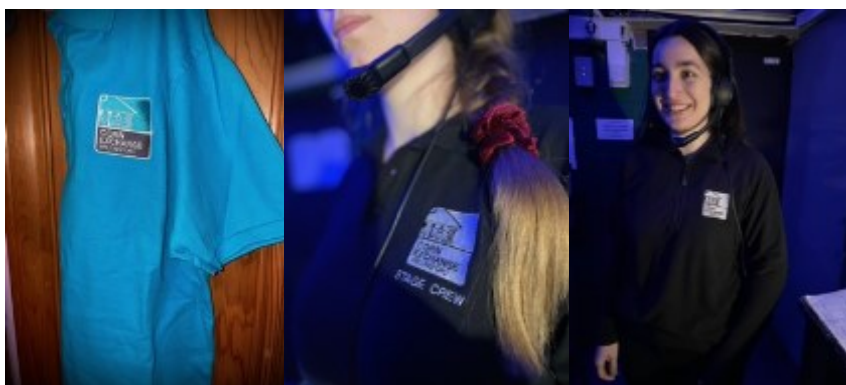
NEW CX uniform:

Long sleeve polo (black or cx blue) £18.00

Short sleeve polo (black or cx blue) £15.00

Long sleeve t-shirt (black or cx blue) £12.00

Fleece (black) £20.00



Each item will have the CX logo embroidered on the left breast to match the colour of the item.

You can also choose to have your job role embroidered underneath the logo for example, "stage crew", "tech crew", "volunteer". You can also opt to keep it blank.

All items are uni-sex so sizes are XS, S, M, L, XL.

If you would like to make an order, please email alice.walker@sinodunplayers.org.uk with the item(s), colour, size and job role.

April 2023

OUR NEXT BIG ADVENTURE



Flying into the Corn Exchange March 2024

AUDITIONS

Saturday 24th & Sunday 25th June

Come and see Chitty lead the Wallingford Car Rally on May 14th



Crescendo Music
In association with
The Sinodun Players
Sponsored by
ChittyHire.com



ChittyHire.com

CORN EXCHANGE MANAGERS

Box Office	John Warburton	boxoffice@cornexchange.org.uk	01491 823878
Box Office Rotas	Barbara Kershaw	cinemaboxofficerota@cornexchange.org.uk	01491 837363
Bar Manager	Pete Orton	barmanager@cornexchange.org.uk	01491 832028
Bar Rotas & Training	David Simmons	barrota@cornexchange.org.uk	01491 839131
Designated Premises Supervisor	Nick Morley	nick.morley@sinodunplayers.org.uk	07843 006704
Cinema Manager	John Warburton	cinemamanager@cornexchange.org.uk	01491 832878
Cinema Rotas	John Pinniger	cinemarotas@cornexchange.org.uk	07722 951670
Newsletter Editor	Jean Simmons	newsletter@sinodunplayers.org.uk	07787 132046
Theatre Bookings	John Warburton	bookings@cornexchange.org.uk	01491 832878
House Manager Rota	Ric Harley	erica.harley@sinodunplayers.org.uk	07798 911734
Usher Rota	Lynn Burrridge	ushersrota@cornexchange.org.uk	01491 833009
Technical Manager	Mike Baker	technicalmanager@cornexchange.org.uk	07788 413694
Coffee Rota (Fri & Sat)	Julie Utley	julieutley53@gmail.com	07818 112348
Coffee Rota (evenings)	Anne Stammers	anne.stammers@sinodunplayers.org.uk	01491 838012
Incoming Show Stage Managers		stagemanager@cornexchange.org.uk	
Room Bookings	Nick Morley	roombooker@cornexchange.org.uk	07843 006704
Housekeeping	Julie Grimshaw	housekeeper@cornexchange.org.uk	07733 026008
Health & Safety	Julie Grimshaw	healthandsafety@cornexchange.org.uk	07733 026008

THE BOARD OF CORN EXCHANGE WALLINGFORD LTD

The Board		board@cornexchange.org.uk	
Chairman	Gloria Wright	chair@cornexchange.org.uk	01491 824206
Secretary	Katie Price	CompanySecretary@cornexchange.org.uk	
Treasurer	Sue Lovegrove	treasurer@cornexchange.org.uk	01491 200558
Directors		directors@cornexchange.org.uk	
Human Resources	Julie Grimshaw	HRDirector@cornexchange.org.uk	07733 026008
Health & Safety	Mahmood Ebrahimjee	Mahmood.Ebrahimjee@cornexchange.org.uk	
Finance	Stephen Williams	financedirector@cornexchange.org.uk	
Marketing & Programming	John Evans	MarketingDirector@cornexchange.org.uk	07785 367512
SPC Representative	Caroline Malnick	Chairman@drama.sinodunplayers.org.uk	07930 540111
Community Liaison	Elaine Hornsby	elaine.hornsby@cornexchange.org.uk	07736 555726
Front of House	Graham Gilgrass	graham.gilgrass@cornexchange.org.uk	07805 029697

April 2023

SINODUN PLAYERS DRAMATIC SOCIETY

President	John Warburton	john.warburton@sinodunplayers.org.uk	01491 832878
Hon Vice President	Jan Castle		01491 839105
Hon Vice President	David Simmons	david.simmons@sinodunplayers.org.uk	01491 839131
Hon Vice President	Keith Yapp	keith.yapp@sinodunplayers.org.uk	
Membership Admin	Barbara Wood	barbara.wood@sinodunplayers.org.uk	01491 832028
TRUSTEES COMMITTEE		committee@trustees.sinodunplayers.org.uk	
Chairman	Martin Parr	chair@trustees.sinodunplayers.org.uk	07789 371678
Financial Trustee	Christine Blackburn	finance@trustees.sinodunplayers.org.uk	07913 011086
	Will Lidbetter	will.lidbetter@sinodunplayers.org.uk	07990 796876
	Emma Trotman	emma.trotman@sinodunplayers.org.uk	07557 737002
	Nick Morley	nick.morley@sinodunplayers.org.uk	07843 006704
	Minaz Beddall	minaz.beddall@sinodunplayers.org.uk	
Secretary	Anna Garland	anna.garland@sinodunplayers.org.uk	07988 700120
SINODUN PLAYERS COMMITTEE		committee@drama.sinodunplayers.org.uk	
Chairman	Caroline Malnick	chairman@drama.sinodunplayers.org.uk	07930 540111
Vice Chairman	Rebecca Cleverley	rebecca.cleverley@sinodunplayers.org.uk	01491 825797
Treasurer	Anne Stammers	treasurer@drama.sinodunplayers.org.uk	01491 838012
Secretary	Marilyn Leadbetter	secretary@drama.sinodunplayers.org.uk	
Membership Liaison	Rebecca Cleverley	rebecca.cleverley@sinodunplayers.org.uk	07734 006797
Artistic Programming	Sarah Enticknap	Sarah.enticknap@sinodunplayers.org.uk	07532 035939
	Dorothy Hirsch	dorothy.hirsch2@sinodunplayers.org.uk	07548 303001
	Guy Gilkes	guy.gilks2@sinodunplayers.org.uk	07850 717765
Encore Liaison	Len Pannett	Len.pannett@sinodunplayers.org.uk	07968 197862
Marketing Head	Bruce Williams	Bruce.williams007@gmail.com	07764 945197
Social & Fundraising	Alice Cornelius	alice.walker@sinodunplayers.org.uk	07850 669665
Webmaster	Sarah Enticknap	webmaster@sinodunplayers.org.uk	
Technical Manager	Mike Baker	Technicalmanager@cornexchange.org.uk	07788 413694

Copy date for the May issue...

All entries for inclusion in the next edition of the Corn Exchange Times to newsletter@sinodunplayers.org.uk by Noon **Sunday 7th May 2023** (or preferably, earlier please).